



Provost's Welcome UNCW Board of Visitors

James (Jamie) Winebrake, Ph.D.

2 October 2020

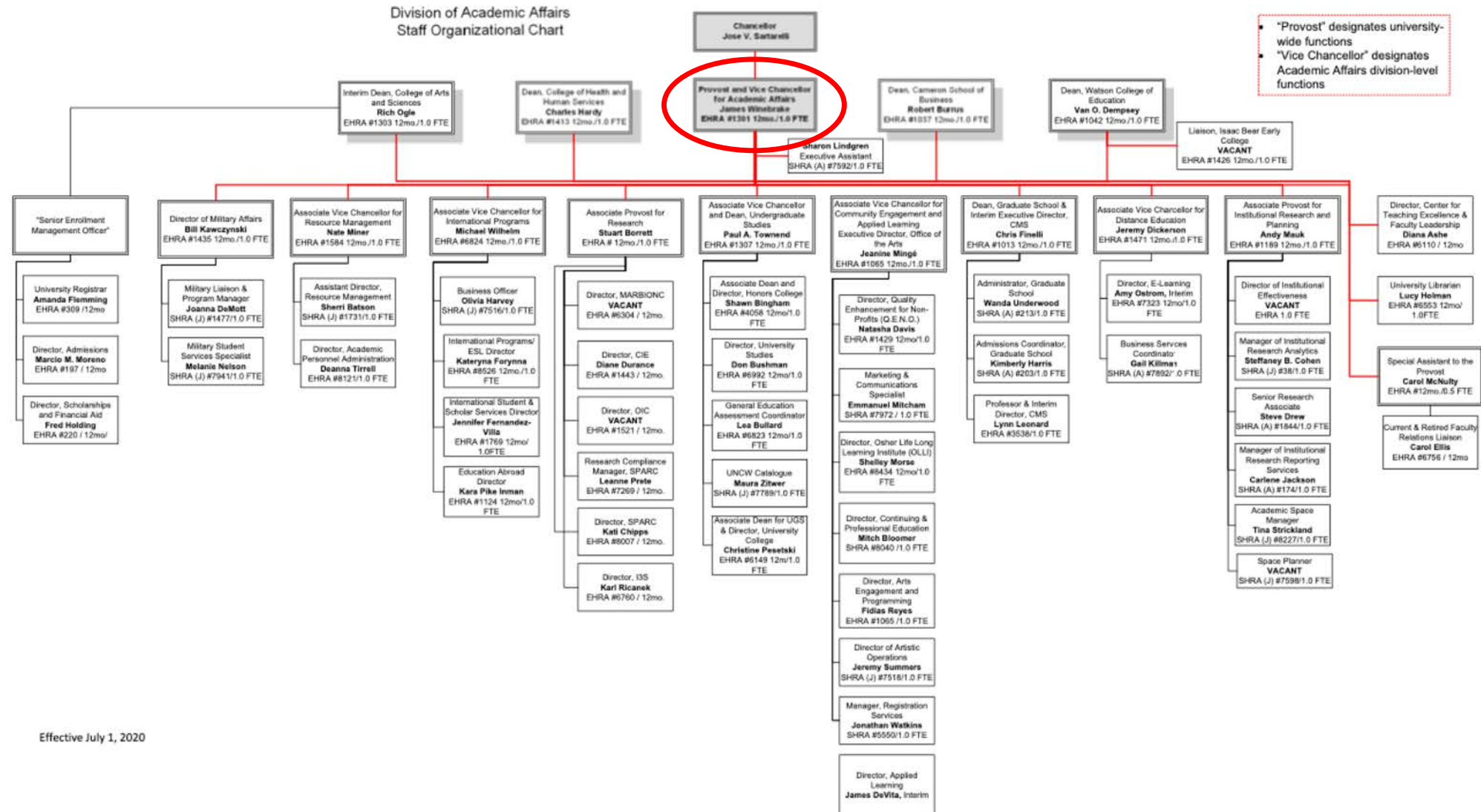
Who Am I
(and, BTW, what actually is a
“Provost”)?

Introduction

- Started 1 July 2020
- Previously Dean of the College of Liberal Arts at Rochester Institute of Technology (9.5 years)
- B.S. Physics (Lafayette College); M.S. Technology and Policy (M.I.T.); Ph.D. Energy Management and Policy (University of Pennsylvania)
- Research focuses on energy and environmental impacts of transportation
- Married with four children (21, 23, 25, 27)
- Excited about taking on this new role!



What is a Provost?



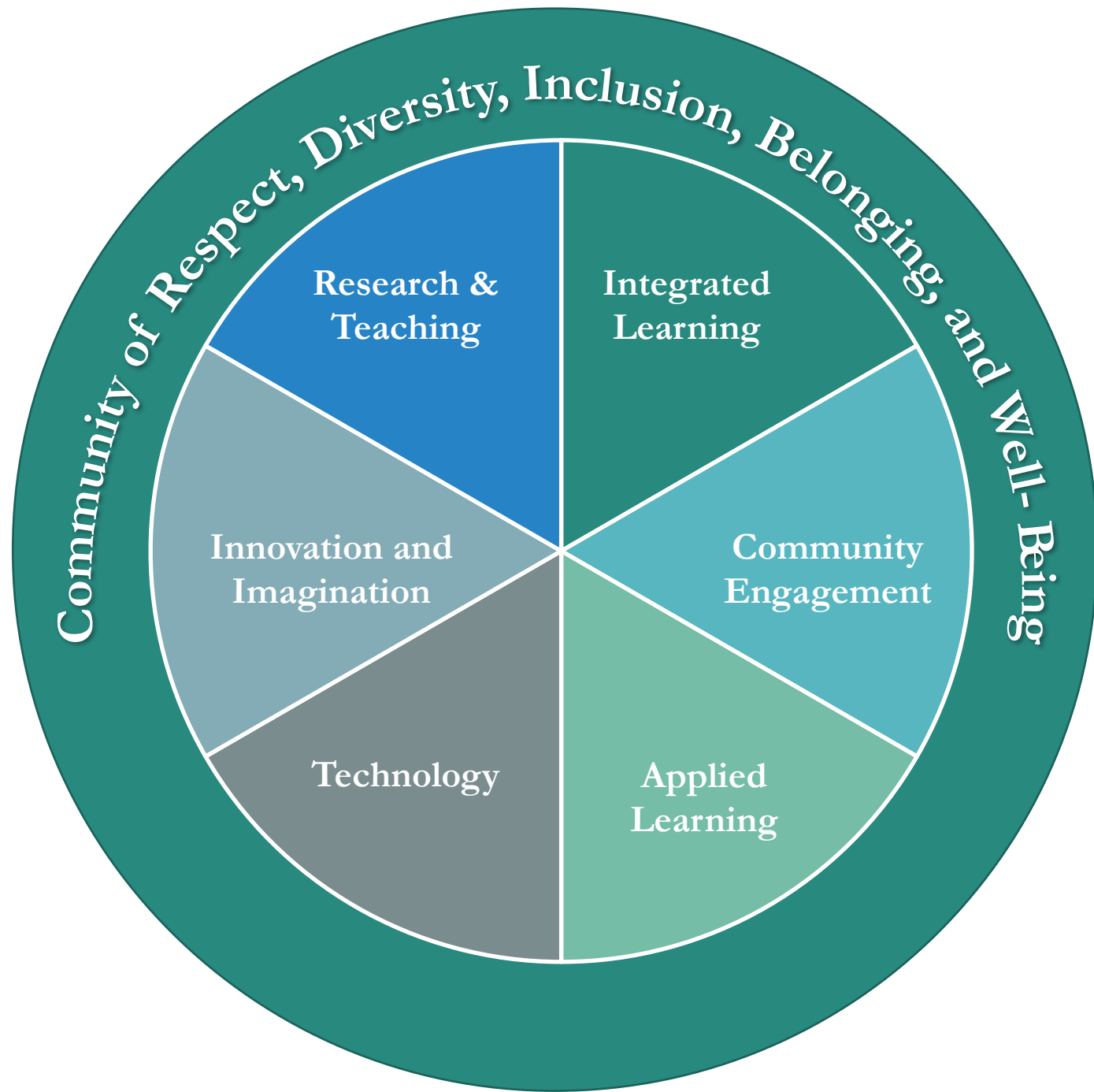
Vision and Focus

Vision

- The Division of Academic Affairs at UNCW will be internationally known as the place where talented people across a wide range of backgrounds and disciplines come together to create transformational experiences for students, faculty, and staff. These experiences enable members of our community to meet their full potential and to create positive change on campus, in their communities, and in their professions.



My Focus...



Evolving Workplan Highlights for Academic Affairs

Evolving AY20-21 Workplan for Academic Affairs

- Operations
 - Ensure we deliver high-quality education and scholarship while we **work our way through COVID**
 - Optimize **Academic Affairs structure** and support infrastructure
- Community
 - Foster a **diverse, equitable, and inclusive environment**
 - Engage with **community, state, national, and global partners** to enrich educational, service, and scholarship opportunities
- Policies and Planning
 - **Develop/revise policies** to be clear, transparent, and fair
 - **Plan in a strategic and integrated fashion** to maximize resource impact

Evolving AY20-21 Workplan (cont'd)

- Student Success
 - Deliver **High Impact Practices** to support student learning and success
 - **Support existing programs and build new programs** that will have high impact and are consistent with UNCW mission, goals, and values
- Faculty and Staff Success
 - **Support sponsored research, scholarship, and creative work** commensurate with *Doctoral University – High Research Activity* status
 - Support **interdisciplinary and integrated** teaching and scholarship opportunities
 - Focus on **quality of instruction** (both in-person and remote learning)
 - Develop **workload models** consistent with our goals and status
 - Ensure all faculty and staff **feel valued and are recognized** for their remarkable work

Questions and Discussion