



CENTER *for* MARINE SCIENCE

“The Coastal University”

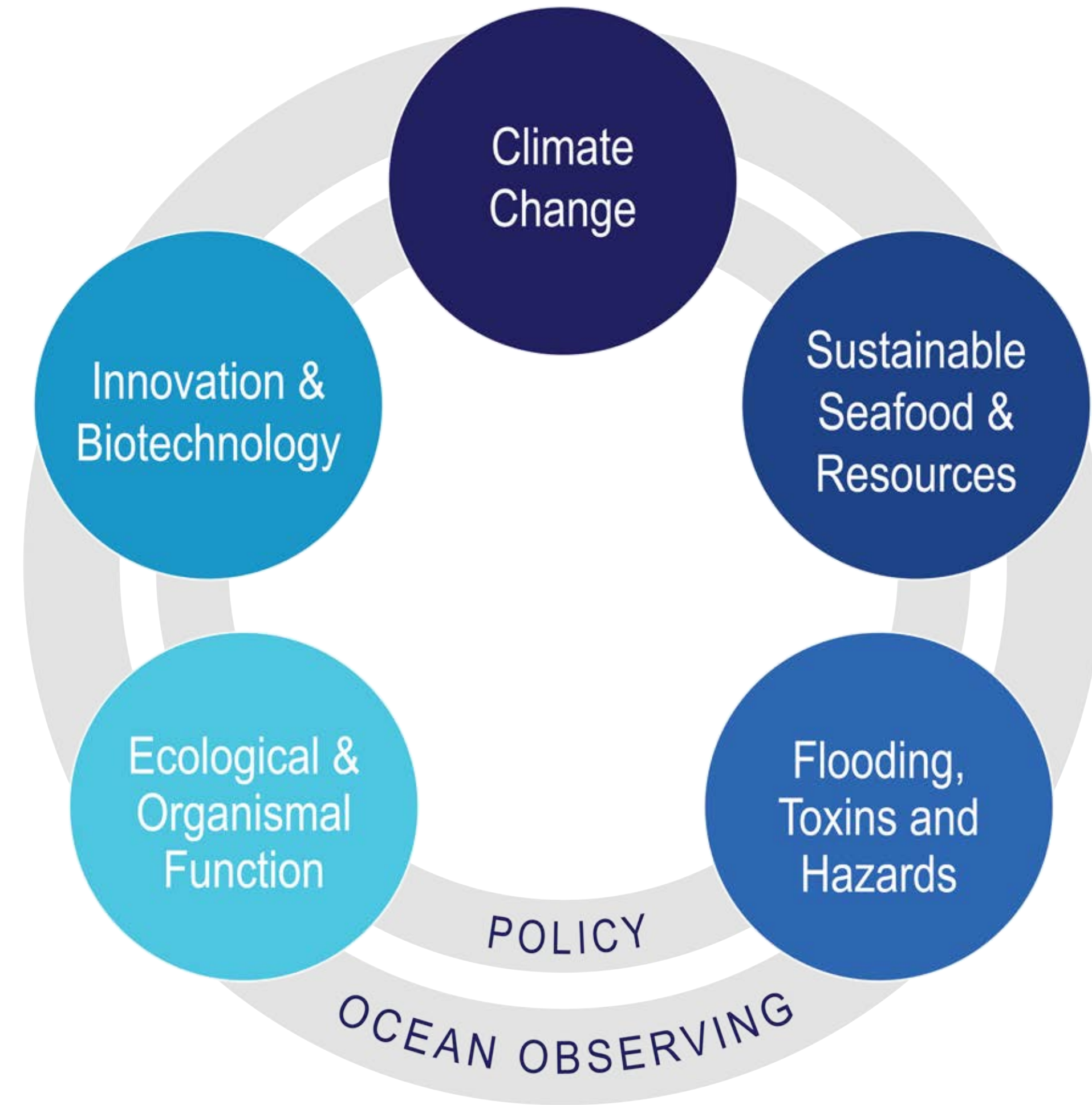
Center for Marine Science

- 50 years
- Myrtle Grove, shellfish and finfish hatcheries
- Affiliated with 108 UNCW faculty & 15 academic programs & MarineQuest

Ensuring safe and healthy coasts



Center *for* Marine Science



CENTER *for* MARINE SCIENCE

Ensuring safe and healthy coasts

Flooding and Inundation

Complex flooding

Need to be able to
model and predict

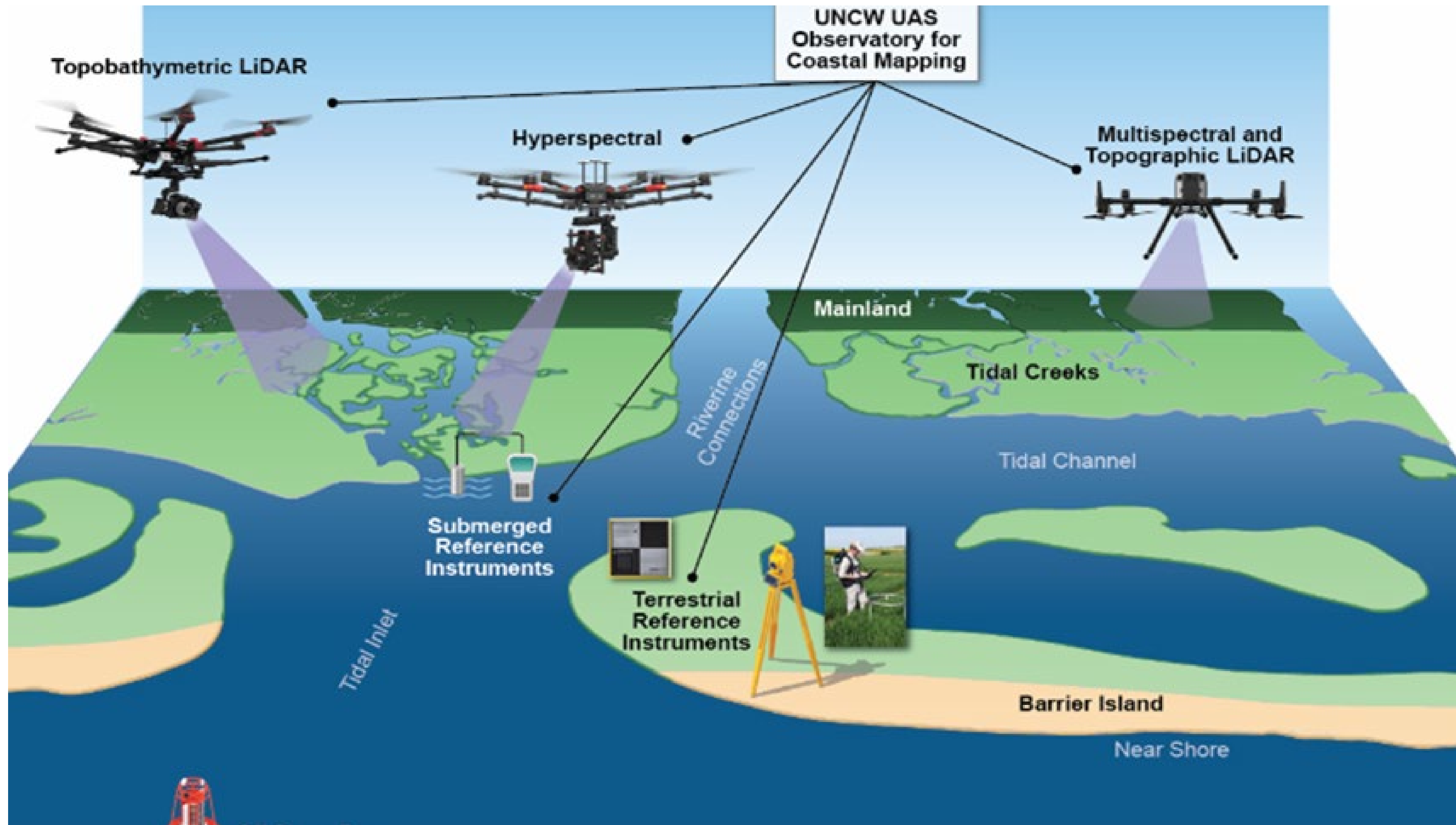
Hazard Nexus



STAR NEWS – CAROLINA BEACH



UNCW Coastal UAS Observatory



Marine AI



Oceanographic Instrumentation

The new buoys CHR60 and CHR60WAVE are already providing valuable weather and sea state data for ships transiting into and out of Charleston Harbor. This is important meteorological and oceanographic information to help aid in safe and efficient marine transportation.

”

TOM BOYLE

Director, Vessel Operations,
South Carolina Ports Authority



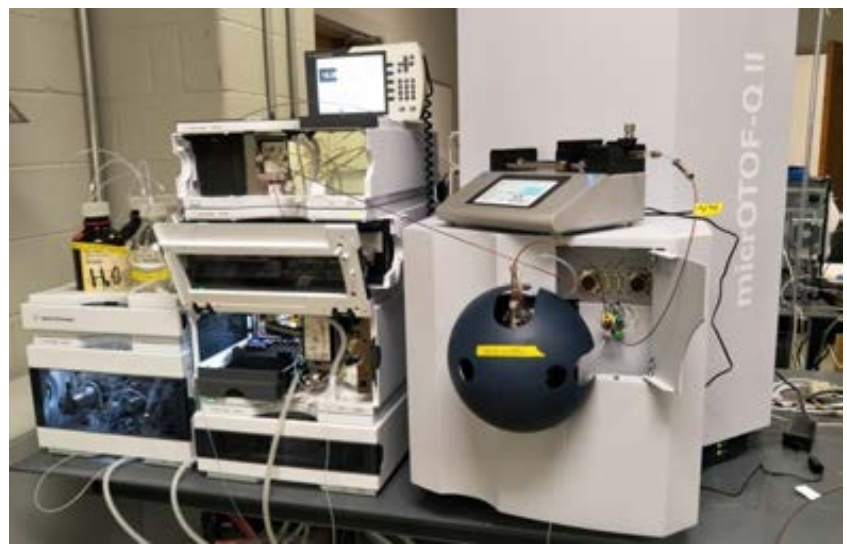
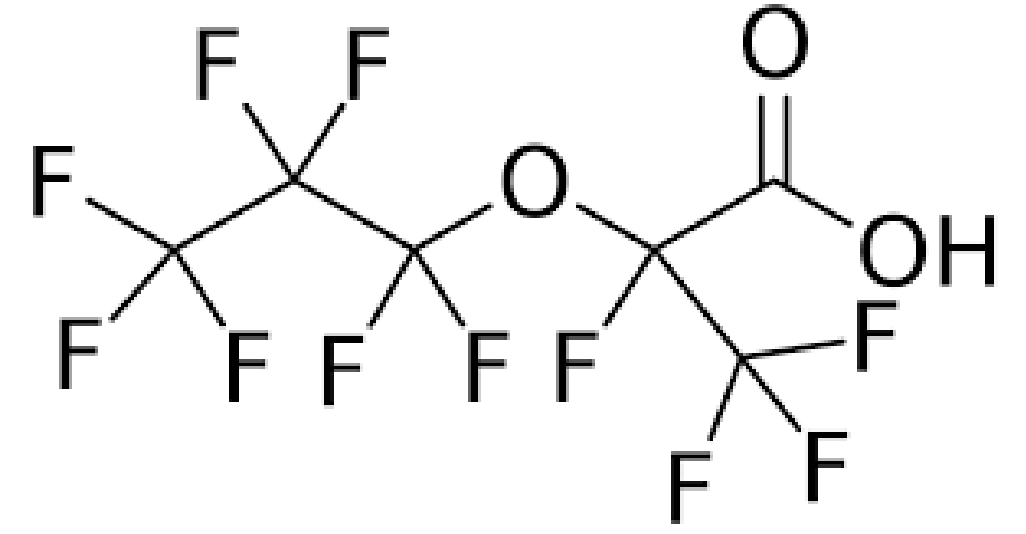
- Operates and maintains a suite of specialized field instrumentation
- Provides technical and electronics support
- Capabilities include:
 - physical, biological and chemical in situ measurements
 - seafloor mapping
 - uncrewed shallow water and aerial surveys
- Support for “hands-on” learning in marine science laboratory courses.

Toxicants & Hazards

Harmful Algal Blooms



PFAS detection



The beauty of North Carolina's lakes and rivers is being threatened by a group of human-made chemicals, known as PFAS, including GenX.

[What are PFAS?](#)



To understand the extent of PFAS contamination across the state, the North Carolina General Assembly funded a statewide research study.

[Learn about the study](#)



This study is a collaboration among universities to document the presence of PFAS and understand its impacts on the environment and our health.

[Meet the Network teams](#)



UNCW Research Shellfish Hatchery



- Includes a 2.75-acre aquaculture demonstration site adjacent to the CMS pier on the intracoastal waterway
- Strategies for increasing productivity:
 - Selective breeding of oysters
 - Crop diversification
 - Polyploidy
 - Growout challenges (including pathogens, parasites)

Finfish Hatchery



- Established in 1997
- Facility on Harbor Island at Wrightsville Beach consists of:
 - broodstock holding systems
 - larviculture lab
 - nutrition lab
- experimental hatchery
- feeds preparation lab
- recirculating growout systems
- access to high-quality seawater from Banks Channel
- **Serving 5 restaurants**

BLUE FISH SOCIETY



 **CENTER FOR
MARINE SCIENCE**

Questions?



CENTER for MARINE SCIENCE